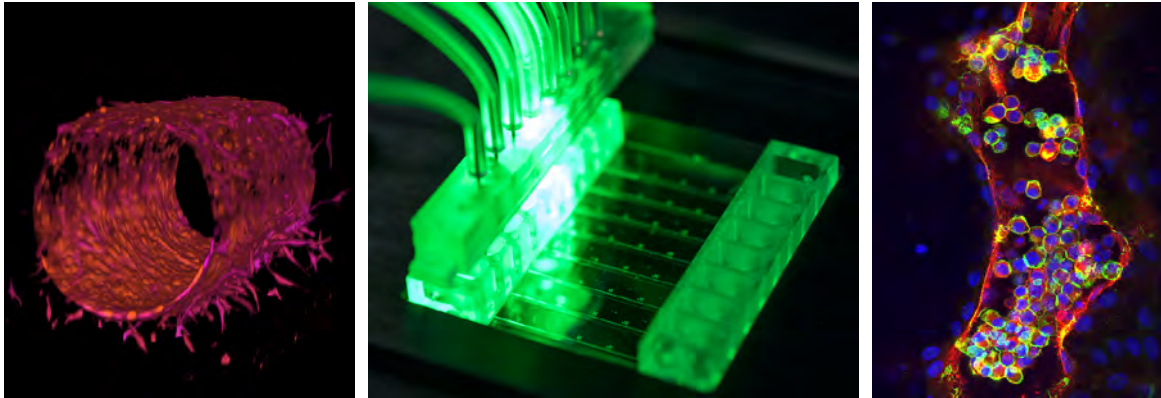


Postdoc NWA-ORC LymphChip

We are looking for an enthusiastic Postdoctoral researcher for our LymphChip project. The aim is to advance organ-on-chip technology by creating miniature tissue models of heart, skin and gut with integrated lymphatic and immune system. The aim is to provide a precision tool for immune-related diseases without using animals. Are you the Postdoc we are looking for?

In short

- You will work for our LymphChip project to advance organ-on-chip by creating miniature tissue models of heart, skin and gut with integrated lymphatic and immune system
- The aim is to provide a precision tool for immune-related diseases without using animals
- You will investigate the process of endothelial cell lineage specification from human pluripotent stem cells with the focus on lymphatic cell lineage
- You have a strong interest in extending your skills towards human pluripotent stem cells culture and differentiation
- Previous experience with human pluripotent stem cell culture is an advantage, but not a prerequisite



About the research

The LymphChip project aims to advance organ-on-chip technology by creating miniature tissue models of heart, skin and gut with integrated lymphatic and immune system. The aim is to provide a precision tool for immune-related diseases without using animals. You will have access to the state-of-the-art Flow Cytometry, Imaging, Organ-on-chip technology and Genomics facilities at Leiden University Medical Center.

You can read more about our research here: [LymphChip](#).

Contact

For more information about this position you can get in touch with Dr. Valeria V. Orlova, department of Anatomy & Embryology, via email: v.orlova@lumc.nl



werkenbijhetlumc.nl

LUMC Leids Universitair
Medisch Centrum